

Ice Maker

Model: ☐ SN-200P



SN-200P

Product Features

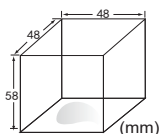
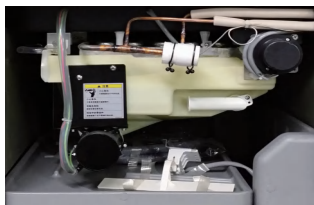
- 1) Spray-type enclosed evaporator. Evaporation temperature -25°C , ice center temperature -17°C .
- 2) Solid ice ,hard and not easy melt,high transparency.
- 3) It can still work normally at peak air 43°C .
- 4) Incorporate R290 refrigerant ,which is more efficient and environmentally friendly, lower global warming.
- 5) Intelligent controller,auto ice making , ice release and cleaning , trouble alarm.
- 6) Adopt SS304 and ABS for ice machine. ice bin designed with interior rounded corners for easy cleaning with PE injection molding process makes smooth and beautiful surface , strong and durable.
- 7) Easy cleaning , Pour the cleaning liquid into the water trough. The cleaning process takes about 35 minutes .
- 8) Easy for repair and service. Removable air filter,water-trough,distribution tube for fast and efficient cleaning,lower labor cost.
- 9) The main components (First well-known international brands). Unique evaporator design with more efficient and energy-saving.
- 10) Perfect for hotels, coffee shops,convenience stores, clubs,Japanese restaurants etc.

Electric Specification

- Rated Voltage: 240V / 50Hz
- Rated Current: 1.2A
- Rated Power: 460W
- Fuse Rating: 10A

Operating Specification

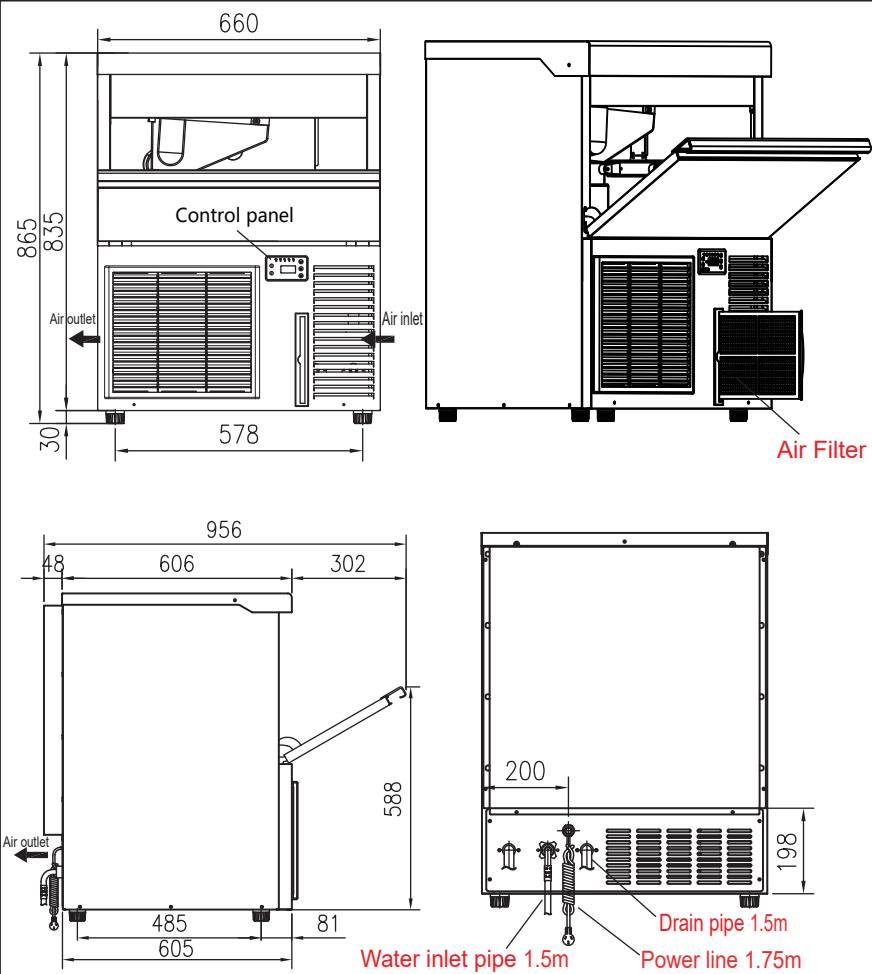
- BTU Per Hour: 2000(Average)/2500(Peak)
- Ambient Temperature Range: 1.7°C - 43.3°C
- Water Temperature Range: 3.2°C - 32.2°C
- Potable Water Pressure: 138KPA-550KPA
- Refrigerant: R290



LS: Large Square
Weight: 110g
Water content: 2%
Dimension: 48*48*58mm



Ice Maker



Width	660mm
Depth	670mm
Height	830mm/860mm
Storage Bin	66 lbs. 30kg.
830mm Height excludes bin legs	
860mm Height includes bin legs	

Specifications

Air cooled	Model	Ice Type	Ice Production 24 Hours (Air/Water)		Power Usage (KWh/100lbs)	Potable Water (Usage/100lbs)
			21°C Air/10°C Water	32°C Air/21°C Water		
	SN-200P	Large Square	215lbs. 98kg	120 lbs. 80 kg	6. 1	58L